

**KENTUCKY'S  
UNIFORM  
CRIME  
REPORTING  
SYSTEM**

# KENTUCKY'S UNIFORM CRIME REPORTING SYSTEM

Prior to July 1, 1987, Kentucky's Uniform Crime Reporting System was based on monthly summary counts of criminal offenses and arrests. This data submitted by state and local law enforcement agencies was adequate for broad analysis of general crime trends, however it did not provide necessary tools for detailed studies required to meet the needs of criminal justice professionals, the law enforcement community and Kentucky legislators.

After July 1, 1987, law enforcement agencies were required to submit "Incident" information which differed from "Summary" in that it provided full detail crime specifics. This marked the beginning of Kentucky's Incident Based Reporting System which required the submission of either the Uniform Offense Report (UOR1) or the uniform data elements as contained in the statewide database. While not complete, Kentucky continues to make progress toward full implementation of a complete Incident Based Reporting System.

## 1996 and 1997

The compilation of the 1996 crime data proved to be a very challenging task for Kentucky State Police due to extensive automated data collection problems. We regret that these problems have not been remedied for the 1997 report. This situation has not effected the offense data, but continues to present problems for us in the storage and evaluation of arrest information.

In an effort to lend support to our crime data retrieval dilemma, the Administrative Office of the Courts, (AOC), provided arrest data for 1996 and are again in this 1997 Crime in Kentucky publication. Because of differing methods of compilation of data, you may notice a wide variance between prior 1995 and 1996 published arrest figures because they were collected from differing sources, however, you should not notice this difference between this year's and last year's statistics. This is due to the fact that we are printing comparable AOC data in this year's crime report, just as we did in the 1996 issue.

Currently Kentucky reports summary statistics in **Crime in Kentucky** and to the Federal Bureau of Investigation. A majority of law enforcement agencies are submitting incident or offense based information. However, several agencies are still submitting summary information due to various factors. With the approach of the year 2000, our goal is to become NIBRS compliant in that all data elements required by the FBI and NIBRS certification are captured. It is our intention, if budgetary constraints allow, to purchase a new computer system and software which would make this possible while, at the same time, update the offense and arrest reports to likewise capture all required elements.

## STATE OFFENSE DATA

PART I CRIMES CLASSIFICATION	OFFENSES REPORTED			
	1997	1996	% CHANGE	% DIST.
MURDER	253	227	+11.45%	0.20%
RAPE	1,191	1,307	-8.88%	0.95%
ROBBERY	3,886	4,271	-9.01%	3.10%
AGGRAVATED ASSAULT	7,997	8,589	-6.89%	6.38%
BURGLARY	27,667	29,306	-5.59%	22.07%
LARCENY THEFT	74,557	76,751	-2.86%	59.47%
AUTO THEFT	9,815	10,441	-6.00%	7.83%
<b>TOTAL</b>	<b>125,366</b>	<b>130,892</b>	<b>-4.22%</b>	<b>100.00%</b>

The total number of Part I crimes reported by law enforcement agencies in Kentucky during 1997 and 1996 is shown in the chart above. It should be noted that these overall statistics reflect only offenses reported to or known by the police.

There were 5,526 fewer Part I offenses reported in 1997, a decrease of 4.22% from 1996. The only category percentage increase was in murder, with an additional 26 reported during 1997, an increase of 11.45%.

When making comparisons between years, the following should be taken into account: (1) Part I offenses are not inclusive of all offenses reported to the police; (2) Increases or decreases in the number of crimes reported can be attributed to a variety of factors, including methods of reporting and tabulating on the part of the law enforcement agencies; (3) Differing levels of citizens' awareness and their responsibility to report crime have a direct impact on the number of reports received by police.

The largest percentage of decrease was in the Robbery category. The second largest percentage of decrease was in the Rape category. This was a direct result of improved reporting and verification procedures which were implemented in 1996. Rape is now reported by the number of reported victims rather than the number of offenses against the same victim. Therefore, one crime is being counted per victim instead of the number of charges or counts of rape.

### OFFENSE DATA COLLEGES AND UNIVERSITIES

JURISDICTION	MURDER	RAPE	ROBBERY	ASSAULT	BURGLARY	LARCENY	AUTO THEFT	TOTAL
EASTERN KY UNIV	0	1	4	4	3	137	7	156
JEFF COMM COLLEGE	0	0	0	0	0	0	0	0
KY STATE UNIV	0	0	0	0	3	56	4	63
MOREHEAD UNIV	0	0	0	0	7	140	1	148
MURRAY ST UNIV	0	3	0	1	33	89	1	127
NORTHERN KY UNIV	0	0	0	1	21	79	1	102
UNIV OF KENTUCKY	0	3	5	3	69	648	15	743
UNIV OF LOUISVILLE	0	0	7	0	12	299	20	338
WESTERN KY UNIV	0	0	1	2	4	184	4	195
<b>TOTAL</b>	<b>0</b>	<b>7</b>	<b>17</b>	<b>11</b>	<b>152</b>	<b>1632</b>	<b>53</b>	<b>1872</b>

\*The chart above shows Part I offenses which occurred on college and university campuses with security/police departments.

**KENTUCKY “CRIME INDEX” = 3,231.1**

The crime index, or rate, is used nationally and is derived from the following formula:

Population divided by 100,000 = X

Number of offenses divided by X = crime index.

Kentucky’s crime index for 1997 is based on the current estimated population of 3.88 million.

**A SERIOUS CRIME OCCURS IN  
KENTUCKY EVERY  
4 MINUTES,  
11 SECONDS.**

Below, Part I offenses are shown for those jurisdictions over 10,000 in population.

**JURISDICTION OVER 10,000 POPULATION**

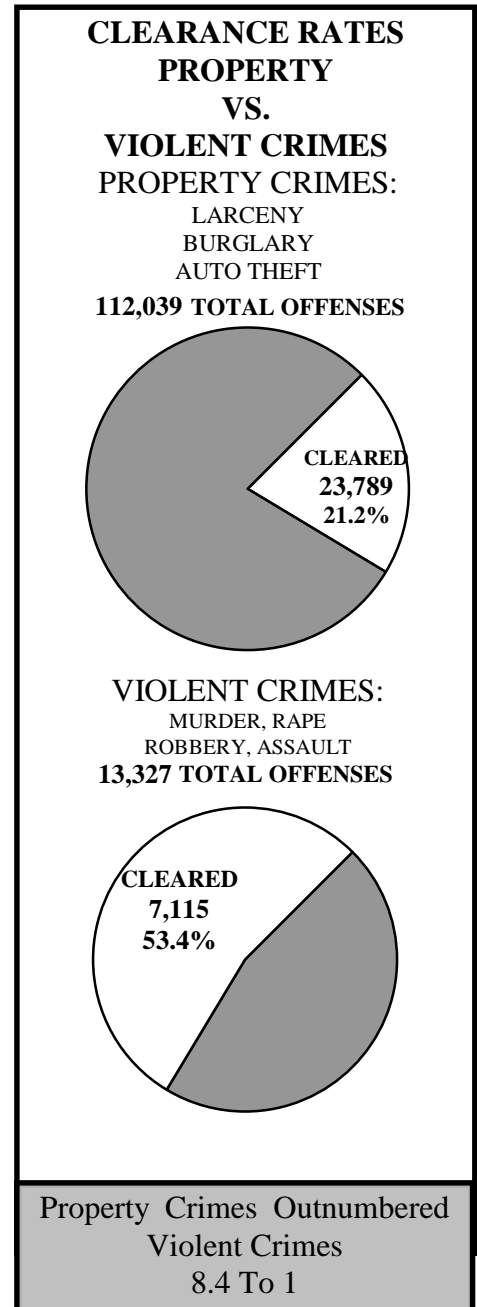
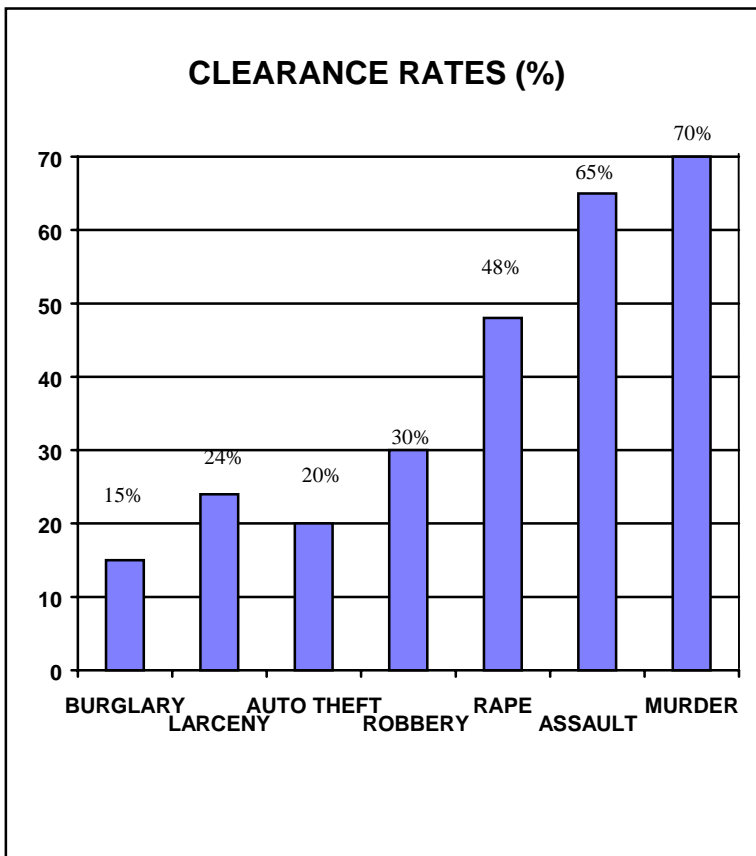
JURISDICTION	MURDER	RAPE	ROBBERY	ASSAULT	BURGLARY	LARCENY	AUTO THEFT	TOTAL
ASHLAND	0	10	14	155	188	835	40	1,242
BEREA	0	3	7	8	83	303	25	429
BOWLING GREEN	4	22	103	299	788	2,229	224	3,669
CAMPBELLSVILLE	0	7	13	39	131	392	29	611
COVINGTON	4	29	199	176	784	2,335	281	3,808
DANVILLE	0	4	16	24	81	449	29	603
ELIZABETHTOWN	0	5	33	31	191	905	57	1,222
ERLANGER	0	5	4	1	41	451	10	512
FLORENCE	1	9	29	44	130	1,250	73	1,536
FRANKFORT	3	15	45	89	220	826	68	1,266
FT THOMAS	0	1	2	1	27	160	10	201
GEORGETOWN	0	6	10	75	168	779	35	1,073
GLASGOW	0	2	5	14	83	109	27	240
HENDERSON	1	17	31	68	294	1,349	86	1,846
HOPKINSVILLE	2	21	44	87	398	1,530	85	2,167
INDEPENDENCE	0	3	3	7	55	206	14	288
JEFFERSON CO PD	15	66	305	1,800	2,159	4,644	794	9,783
JEFFERSONTOWN	1	8	27	7	62	567	57	729
LEXINGTON	24	130	580	1,195	2,610	9,721	906	15,166
LOUISVILLE	64	128	1,545	1,339	4,481	8,706	2,829	19,092
MADISONVILLE	0	7	12	337	147	914	76	1,493
MAYFIELD	1	3	14	20	78	190	20	326
MIDDLESBORO	1	1	3	10	75	574	22	686
MURRAY	0	0	4	12	28	156	9	209
NEWPORT	0	8	27	46	185	1,108	97	1,471
NICHOLASVILLE	0	3	5	35	190	612	67	912
OWENSBORO	0	22	72	58	600	2,098	95	2,945
PADUCAH	8	22	63	124	282	1,644	127	2,270
RADCLIFF	1	9	29	41	194	714	27	1,015
RICHMOND	4	5	28	73	236	991	85	1,422
SHIVELY	1	4	66	18	185	394	189	857
SOMERSET	1	13	9	37	111	502	36	709
ST MATTHEWS	0	2	37	10	110	790	54	1,003
WINCHESTER	1	0	10	23	152	675	43	904
<b>TOTALS</b>	<b>137</b>	<b>590</b>	<b>3,394</b>	<b>6,303</b>	<b>15,547</b>	<b>49,108</b>	<b>6,626</b>	<b>81,705</b>

## CLEARANCE RATES

Clearance rates are the percentages of cases cleared (through arrest or exceptional means) when compared with the total number of offenses reported to or known by the police. As shown in the chart, clearance rates for property crimes are traditionally low. With the exception of robbery, clearance rates for violent crimes are high. High clearance rates for murder, rape, and aggravated assault are attributable to the fact that the perpetrator is known, recognizable, or in some way usually associated with the victim. Low clearance rates for robbery as well as property crimes can be attributed to the difficulty of the victim identifying the perpetrator.

The right-hand chart depicts the relative clearance rates of property versus violent Part I crimes.

The chart below depicts relative clearance rates for each of the seven Part I crimes.



# MURDER

## DEFINITION

Murder is the unlawful killing of a human being with malice aforethought. Justifiable homicides and traffic-related deaths are not included.

NUMBER REPORTED	CLEARANCES	RATE
253	176	69.57%

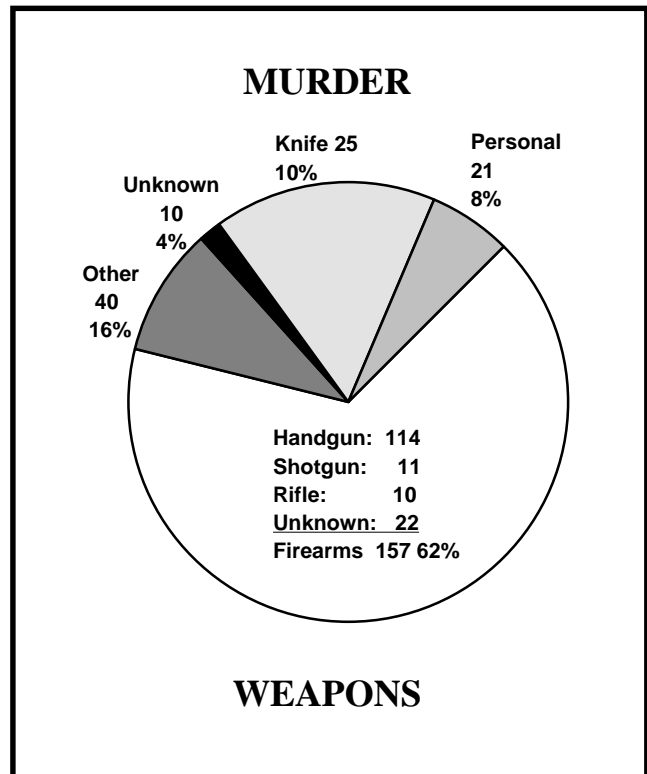
Murder is the most serious of all Part I crimes. The clearance rate is the highest of all Part I crimes, at 70%. Although some murders are difficult to solve, the intensity of police investigations, together with solvability factors, account for the high clearance rate for murder.

**MURDER WAS COMMITTED  
EVERY  
34 HOURS, 37 MINUTES**

## MURDER CIRCUMSTANCES/WEAPONS

CIRCUMSTANCES	
ARGUMENT	79
FELONY INVOLVED	32
LOVER'S QUARREL	5
GANGLAND	0
OTHER	84
UNKNOWN	53
<b>TOTAL</b>	<b>253</b>

These charts depict murder weapons and circumstances as reported by police officers. The unknown category reflects instances where the weapon/circumstances were not known at the time the report was submitted, or were not specified on the report. 62% of the victims were killed with a firearm.

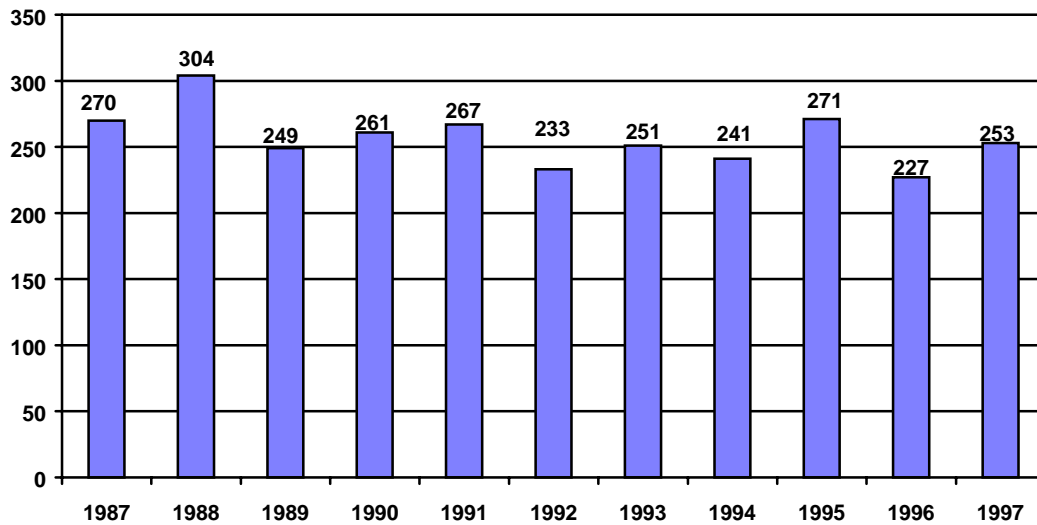


## MURDER

AGE	VICTIM							OFFENDER							
	SEX			RACE				SEX			RACE				
	M	F	U	W	B	O	U	M	F	U	W	B	O	U	
UNDER 1	1	2	0	2	1	0	0	0	0	0	0	0	0	0	0
1-4	2	0	0	1	1	0	0	0	0	0	0	0	0	0	0
5-9	0	0	0	0	0	0	0	0	0	0	0	0	0	0	0
10-14	3	5	0	6	2	0	0	4	2	0	3	3	0	0	0
15-19	23	11	0	14	20	0	0	28	5	15	16	17	0	15	0
20-24	32	10	0	25	17	0	0	15	16	7	23	8	0	7	0
25-29	21	3	0	18	5	1	0	14	8	2	16	6	0	2	0
30-34	16	9	0	18	7	0	0	11	5	3	12	4	0	3	0
35-39	19	6	0	20	4	1	0	11	3	1	11	3	0	1	0
40-44	15	4	0	15	4	0	0	11	2	2	12	0	1	2	0
45-49	10	8	0	16	2	0	0	10	1	1	8	3	0	1	0
50-54	8	4	0	9	3	0	0	5	4	0	8	1	0	0	0
55-59	11	4	0	13	2	0	0	6	2	2	8	0	0	2	0
60-64	6	0	0	6	0	0	0	2	1	0	3	0	0	0	0
65-69	0	0	0	0	0	0	0	0	0	0	0	0	0	0	0
70-74	3	2	0	4	1	0	0	1	0	0	0	1	0	0	0
75+	9	3	0	9	3	0	0	1	1	0	2	0	0	0	0
UNK	2	0	1	2	0	0	1	58	12	1	47	22	1	1	0
<b>TOTAL</b>	181	71	1	178	72	2	1	177	62	34	169	68	2	34	0
<b>%</b>	72%	28%	0%	71%	28%	1%	0%	65%	23%	12%	62%	25%	0%	13%	0%

M=MALE, F=FEMALE, U=UNKNOWN, W=WHITE, B=BLACK, O=OTHER, U=UNKNOWN

### 10 YEAR MURDER VICTIM TREND



# RAPE

## DEFINITION

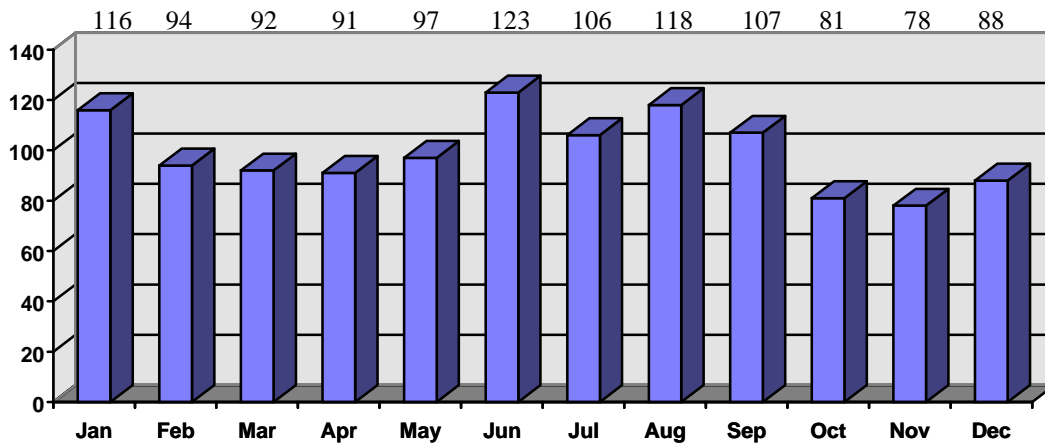
Rape is defined as the carnal knowledge of a person, forcibly or otherwise, against the person's will. Only forcible rapes are included, together with assaults for the purpose of rape and attempted forcible rapes. Excluded are rapes where the victim is under the age of consent and no force is used.

NUMBER REPORTED	CLEARANCES	RATE
1,191	572	48.03%

The 48% clearance rate for rape is high when compared with property crimes. One explanation for the number of rapes cleared is the fact that the victim and the offender are frequently acquainted or even related.

**RAPE  
WAS COMMITTED EVERY  
7 HOURS, 36 MINUTES**

## NUMBER OF RAPES BY MONTH





# ROBBERY

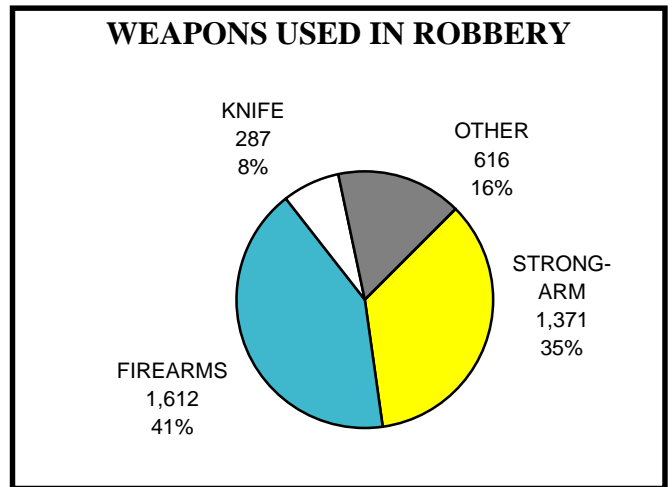
## DEFINITION

Robbery is the felonious taking of the property of another by force, the threat of force, violence, and/or by putting the victim in fear. All attempted robberies are included. Robberies are reported in two general categories: armed (any weapon or threatening object is used) and strong-arm (to include muggings and similar offenses where no weapon is used but strong-arm tactics are employed).

NUMBER REPORTED	CLEARANCES	RATE
<b>3,886</b>	<b>1,155</b>	<b>30%</b>

Robbery is considered to be a serious crime because the element of fear and personal confrontation with a weapon or strong-arm tactic is always present. The **30%** clearance rate for robbery is slightly higher than for other crimes motivated by the theft of property, but low in comparison to murder, assault, and rape in which the element of personal confrontation is also present. This is attributable to the fact that the perpetrator usually conceals his personal identity from the victim.

Reported robberies decreased by **9.01%** in Kentucky in 1997.



**ROBBERY WAS COMMITTED EVERY 2 HOURS, 15 MINUTES**

## ROBBERY - PLACE OF OCCURRENCE

CLASSIFICATION	NUMBER OF OFFENSES	PERCENT OF DISTRIBUTION	TOTAL VALUE	AVERAGE VALUE
Highway	1,773	45.62%	\$701,015.90	\$395.38
Commercial House	608	15.65%	\$335,607.37	\$551.99
Gas-Service Station	116	2.99%	\$50,537.26	\$435.67
Chain Store	248	6.38%	\$73,891.38	\$297.95
Residence	474	12.20%	\$370,023.86	\$780.64
Bank	86	2.21%	\$679,602.00	\$7,902.35
Miscellaneous	581	14.95%	\$566,176.50	\$974.49
<b>TOTAL</b>	<b>3,886</b>	<b>100.0%</b>	<b>\$2,776,854.27</b>	<b>\$714.58</b>

Robbery classifications denote the type of robbery reported. Highway robberies occur on any roadway, whether it be a highway, county road, or city street. Commercial house robberies are those perpetrated in hotels, motels, restaurants, and like businesses. Chain store robberies include convenience type stores, groceries, and like businesses. Residences include homes and apartments and other dwellings.

## AGGRAVATED ASSAULT

### DEFINITION

Assault is the unlawful attack by one person upon another for purpose of inflicting severe or aggravated bodily injury. It is not necessary that injury result from an aggravated assault when a gun, knife, or other weapon is used which could, and probably would, result in serious personal injury. Therefore, all assault attempts where serious injury would have been likely to occur are included. Excluded from the Part I crime of aggravated assault are all assaults which do not include the use of a dangerous weapon and in which there was no serious or aggravated injury (assault 4<sup>th</sup>). These simple assaults are counted as Part II crimes.

NUMBER REPORTED	CLEARANCES	RATE
<b>7,997</b>	<b>5,212</b>	<b>65.17%</b>

The **65%** clearance rate is high because the victim is frequently related to or acquainted with the assailant.

**AGGRAVATED ASSAULT WAS COMMITTED  
EVERY 1 HOUR, 1 MINUTE**

The category of aggravated assault includes the following offenses: attempts to murder, poisoning, assault with a dangerous or deadly weapon; maiming; assault with explosives; and all attempts to commit said offenses.

Weapons used in aggravated assault are shown in the chart below.

WEAPONS USED IN AGGRAVATED ASSAULT		
TYPE WEAPON	NUMBER	% OF TOTAL
PERSONAL WEAPONS	3,053	38.18%
OTHER WEAPONS	2,441	30.52%
FIREARMS	1,499	18.75%
KNIVES	1,004	12.55%
<b>TOTAL</b>	<b>7,997</b>	<b>100.00%</b>

## BURGLARY

### DEFINITION

Burglary is the unlawful entering or remaining in a building with the intent to commit a crime. This includes entries where force of any kind is used to gain entrance, entries where no force was used (an unlocked door or by concealment), and attempts to enter forcibly (even though entry was not actually gained).

NUMBER REPORTED	CLEARANCES	RATE
<b>27,667</b>	<b>4,232</b>	<b>15.30%</b>

Burglary is one of the most frequently committed Part I crimes.  
Burglary decreased **5.59%** from **29,306** in 1996, to **27,667** in 1997.

**BURGLARY WAS COMMITTED EVERY 19 MINUTES.**

### THE COST OF BURGLARY

Burglary is a crime of opportunity and is most likely to occur when a home or business is not occupied. The number of burglaries, classified by residential and non-residential, including both day and night occurrences, and the value of property losses reported, is shown in the table below.

CLASSIFICATION	NUMBER OF OFFENSES	PERCENT OF DISTRIBUTION	TOTAL VALUE	AVERAGE VALUE
<b>RESIDENTIAL</b>				
NIGHT	7,290	26.4%	\$7,568,947.01	\$1,038.26
DAY	7,312	26.4%	\$7,577,112.15	\$1,036.27
UNKNOWN	3,750	13.6%	\$4,153,037.72	\$1,107.48
<b>SUBTOTAL</b>	<b>18,352</b>	<b>66.4%</b>	<b>\$19,299,096.88</b>	<b>\$1,051.61</b>
<b>NON-RESIDENTIAL</b>				
NIGHT	2,755	10.0%	\$2,756,399.49	\$1,000.51
DAY	4,171	15.1%	\$4,520,915.99	\$1,083.89
UNKNOWN	2,389	8.6%	\$2,984,877.52	\$1,249.43
<b>SUBTOTAL</b>	<b>9,315</b>	<b>33.7%</b>	<b>\$10,262,193.00</b>	<b>\$1,101.68</b>
<b>TOTAL</b>	<b>27,667</b>	<b>100.0%</b>	<b>\$29,561,289.88</b>	<b>\$1,068.47</b>

## LARCENY

### DEFINITION

Larceny, or larceny-theft, is the unlawful taking of property or articles of value without the use of force, violence, or fraudulent conversion. Included are such offenses as pocket picking, purse snatching (where little or no force is used), shoplifting, thefts from autos, thefts of auto parts and accessories, bicycle thefts, and thefts from buildings when the perpetrator entered legally. Con games, forgeries and bad checks, embezzlement, and obtaining money under false pretenses are not included under the category of larceny.

NUMBER REPORTED	CLEARANCES	RATE
<b>74,557</b>	<b>17,568</b>	<b>23.56%</b>

Larceny is the most frequently committed Part I crime. Other than the stolen property itself, there are normally few clues on which to base an investigation. Consequently, the clearance rate for larceny is low at **24%** in 1997.

**LARCENY WAS COMMITTED EVERY  
7 MINUTES, 3 SECONDS.**

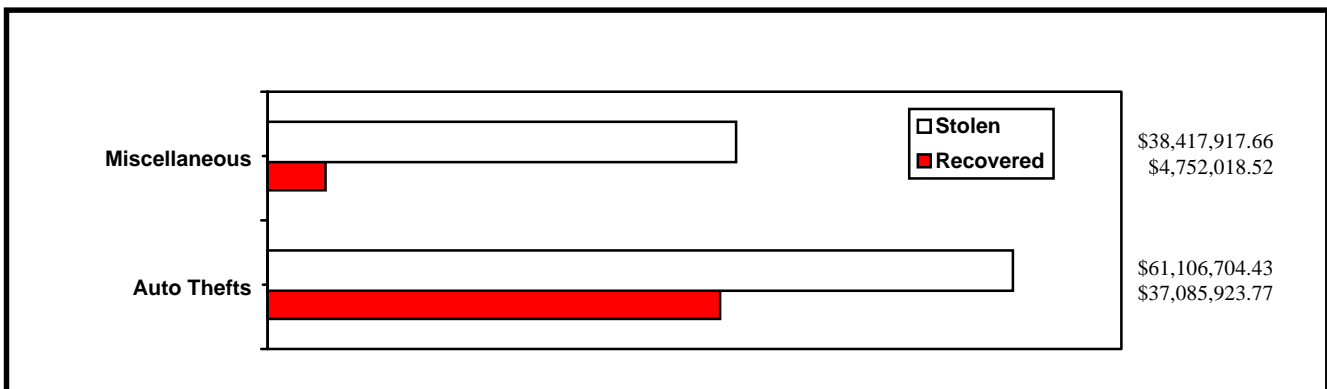
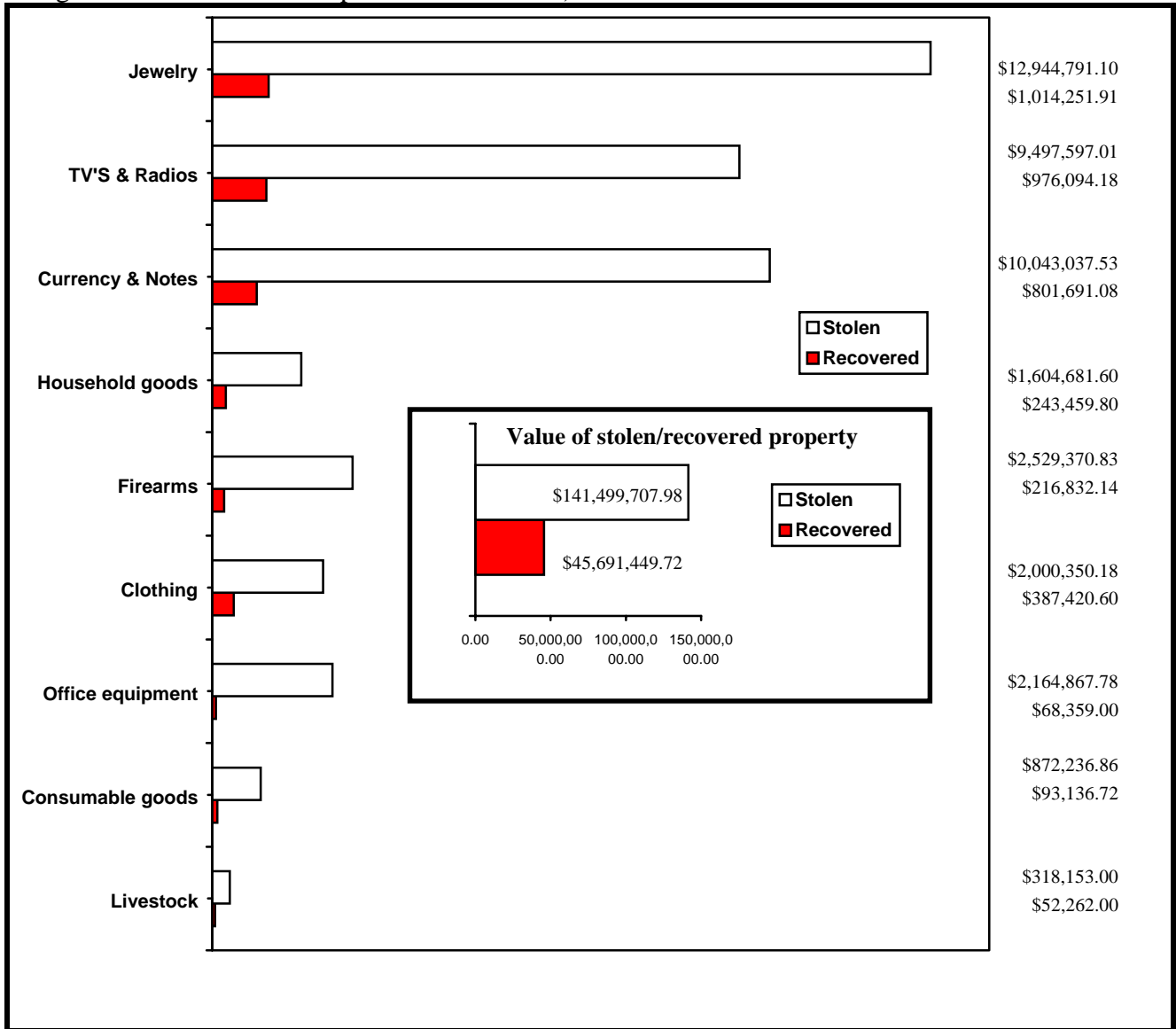
### THE COST OF LARCENY

The table below shows the different types of larcenies reported in Kentucky during 1997 by classifications. The number of offenses in each classification as well as the value of the stolen property is shown below.

CLASSIFICATION	NUMBER OF OFFENSES	PERCENT OF DISTRIBUTION	TOTAL VALUE	AVERAGE VALUE
Pocket Picking	638	.9%	\$77,299.99	\$121.16
Purse Snatching	601	.8%	\$323,729.49	\$538.65
Shoplifting	12,254	16.4%	\$1,549,106.81	\$126.42
From Autos	18,353	24.6%	\$10,506,236.66	\$572.45
Auto Parts and Accessories	6,200	8.3%	\$2,509,718.18	\$404.79
Bicycles	3,800	5.1%	\$761,841.23	\$200.48
From Buildings	7,645	10.3%	\$7,033,597.95	\$920.03
From Coin Operated Machines	381	.5%	\$1,061,798.50	\$2,786.87
Livestock	360	.5%	\$149,696.00	\$415.82
Farm Equipment	87	.1%	\$250,632.00	\$2,880.83
All Other	24,238	32.5%	\$24,576,430.05	\$1,013.96
<b>TOTAL</b>	<b>74,557</b>	<b>100.0%</b>	<b>\$48,800,086.86</b>	<b>\$654.53</b>

## VALUE OF PROPERTY STOLEN/RECOVERED

The estimated value of property reported stolen and recovered in Kentucky during 1997 is illustrated by the graph below. (Graph only shows stolen and recovered value ratios for each category. Categories should not be compared to each other.)



# AUTO THEFT

## DEFINITION

Auto Theft includes all thefts and attempted thefts of motor vehicles. The taking of a vehicle for temporary use when prior authority has been granted would not be classified as auto theft.

NUMBER REPORTED	CLEARANCES	RATE
9,815	1,989	20.26%

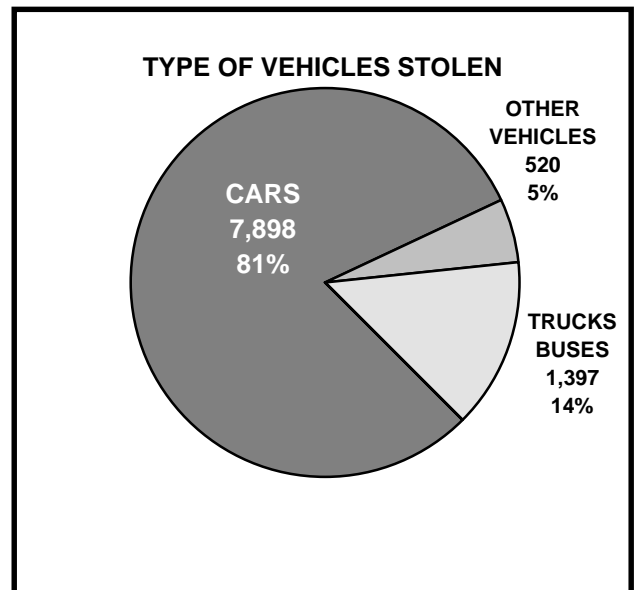
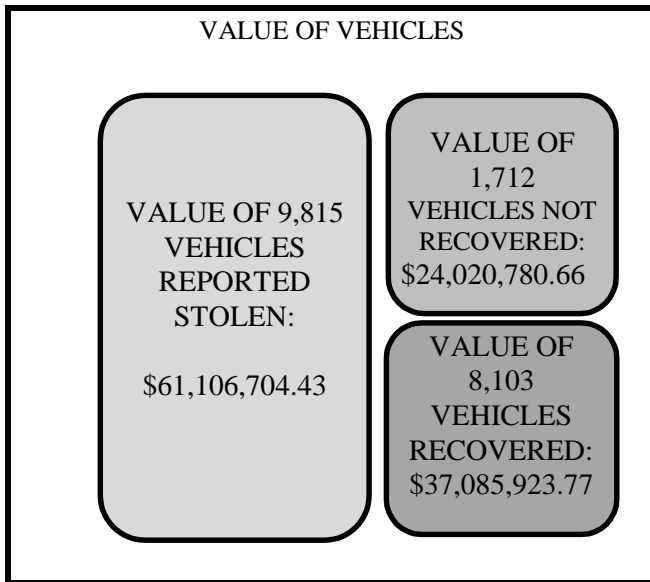
**AUTO THEFT WAS COMMITTED EVERY 53 MINUTES, 33 SECONDS**

## THE COST OF AUTO THEFT

The value of stolen vehicles as well as recovered and non-recovered vehicles is shown in the chart below.

Of the 9,815 vehicles stolen, 82.6 % were recovered. These figures do not include vehicles stolen out of state and recovered in Kentucky.

A breakdown, by type of vehicles stolen, is shown in the chart below. Cars include automobiles, taxi cabs, and other passenger vehicles. Other vehicles stolen include mopeds, motorcycles, motor scooters, trailbikes, etc.



## ARSON

### DEFINITION

Arson includes any willful or malicious burning or attempt to burn (with or without intent to defraud) a residence, public building, motor vehicle or aircraft, personal property of another, etc. Only fires determined to have been willfully or maliciously set are classified as arson.

NUMBER REPORTED	CLEARANCES	RATE
1,826	236	12.92%

The chart below shows the number of arsons by property classification, total arsons cleared, and the estimated value of property damage or destruction.

**ARSON WAS COMMITTED EVERY  
4 HOURS, 48 MINUTES**

PROPERTY CLASSIFICATION	NUMBER OF OFFENSES	TOTAL OFFENSES CLEARED	ESTIMATED VALUE OF PROPERTY DAMAGED
Single Occupancy Residential (Houses, Townhouses, Duplexes, etc.)	676	57	\$5,434,336.00
Other Residential (Apartments, Flats, Hotels, Motels, Dorms, etc.)	217	39	\$789,720.00
Storage (Barns, Garages, Warehouses, etc.)	110	15	\$1,932,143.00
Industrial/Manufacturing	20	0	\$152,100.00
Other Commercial (Stores, Restaurants, Offices, etc.)	89	8	\$4,086,228.00
Community/Public (Churches, Jails, Schools, Colleges, Hospitals, etc.)	107	28	\$255,763.00
All Other Structures (Outbuildings, Monuments, Buildings under Construction, etc.)	33	3	\$82,204.00
<b>TOTAL STRUCTURE</b>	1,252	150	\$12,732,494.00
Motor Vehicles (Autos, Trucks, Buses, Motorcycles, etc.)	342	28	\$1,061,469.00
Other Mobile Property (Trailers, Recreational Vehicles, Airplanes, Boats, etc.)	36	2	\$215,368.00
<b>TOTAL MOBILE</b>	378	30	\$1,276,837.00
<b>TOTAL OTHER (fences, crops, timber, etc.)</b>	196	56	\$231,403.00
<b>GRAND TOTAL</b>	1,826	236	\$14,240,734.00

## KENTUCKY OFFENSES BY COUNTY AND AGENCY

COUNTY CONTRIBUTING AGENCY	MURDER	RAPE	ROBBERY	ASSAULT	BURGLARY	LARCENY	AUTO THEFT	TOTAL
<b>ADAIR</b>	1	6	0	7	87	116	14	231
STATE POLICE	1	5	0	4	57	42	9	118
SHERIFF	0	0	0	0	0	0	0	0
COLUMBIA	0	1	0	3	30	74	5	113
ALL OTHER AGENCIES	0	0	0	0	0	0	0	0
<b>ALLEN</b>	1	2	3	5	42	64	9	126
STATE POLICE	0	2	1	4	2	1	1	11
SHERIFF	0	0	0	0	22	40	1	63
SCOTTSVILLE	1	0	2	1	12	19	7	42
ALL OTHER AGENCIES	0	0	0	0	6	4	0	10
<b>ANDERSON</b>	0	10	0	13	65	207	11	306
STATE POLICE	0	8	0	4	17	52	2	83
SHERIFF	0	1	0	2	11	20	1	35
LAWRENCEBURG	0	1	0	7	37	131	7	183
ANDERSON CO PATROL	0	0	0	0	0	3	1	4
ALL OTHER AGENCIES	0	0	0	0	0	1	0	1
<b>BALLARD</b>	0	3	0	3	13	39	3	61
STATE POLICE	0	3	0	3	0	0	0	6
SHERIFF	0	0	0	0	11	38	3	52
LACENTER	0	0	0	0	2	1	0	3
ALL OTHER AGENCIES	0	0	0	0	0	0	0	0
<b>BARREN</b>	0	2	5	24	195	318	54	598
STATE POLICE	0	0	0	10	10	9	7	36
SHERIFF	0	0	0	0	79	86	13	178
GLASGOW	0	2	5	14	83	109	27	240
CAVE CITY	0	0	0	0	22	108	6	136
PARK CITY	0	0	0	0	1	0	1	2
ALL OTHER AGENCIES	0	0	0	0	0	6	0	6
<b>BATH</b>	1	3	0	4	52	55	12	127
STATE POLICE	1	3	0	4	42	34	10	94
SHERIFF	0	0	0	0	6	11	2	19
OWINGSVILLE	0	0	0	0	4	10	0	14
ALL OTHER AGENCIES	0	0	0	0	0	0	0	0
<b>BELL</b>	3	13	3	29	180	710	42	980
STATE POLICE	2	12	0	14	75	81	9	193
SHERIFF	0	0	0	3	17	25	5	50
MIDDLESBORO	1	1	3	10	75	574	22	686
PINEVILLE	0	0	0	2	11	28	6	47
ALL OTHER AGENCIES	0	0	0	0	2	2	0	4
<b>BOONE</b>	1	26	37	130	390	2,155	158	2,897
STATE POLICE	0	0	0	0	0	2	0	2
SHERIFF	0	0	1	26	49	193	11	280
BOONE CO PD	0	16	6	56	205	514	52	849
FLORENCE	1	9	29	44	130	1,250	73	1,536
WALTON	0	1	0	4	6	39	2	52
CIN - N KY AIRPORT	0	0	1	0	0	157	20	178
ALL OTHER AGENCIES	0	0	0	0	0	0	0	0



## KENTUCKY OFFENSES BY COUNTY AND AGENCY

COUNTY CONTRIBUTING AGENCY	MURDER	RAPE	ROBBERY	ASSAULT	BURGLARY	LARCENY	AUTO THEFT	TOTAL
<b>BOURBON</b>	1	1	13	17	91	515	33	671
STATE POLICE	0	0	1	0	24	223	6	254
SHERIFF	0	0	0	0	10	16	3	29
PARIS	1	1	11	15	54	274	24	380
MILLERSBURG	0	0	1	2	3	2	0	8
ALL OTHER AGENCIES	0	0	0	0	0	0	0	0
<b>BOYD</b>	1	19	22	174	350	1,206	93	1,865
STATE POLICE	0	8	1	3	50	127	9	198
SHERIFF	1	0	4	12	86	158	37	298
ASHLAND	0	10	14	155	188	835	40	1,242
CATLETTSBURG	0	1	3	2	14	76	7	103
BOYD CO PD	0	0	0	2	12	9	0	23
ALL OTHER AGENCIES	0	0	0	0	0	1	0	1
<b>BOYLE</b>	0	7	16	31	132	513	32	731
STATE POLICE	0	3	0	2	6	8	0	19
SHERIFF	0	0	0	3	40	40	2	85
DANVILLE	0	4	16	24	81	449	29	603
JUNCTION CITY	0	0	0	2	2	8	0	12
PERRYVILLE	0	0	0	0	3	8	1	12
ALL OTHER AGENCIES	0	0	0	0	0	0	0	0
<b>BRACKEN</b>	0	2	0	2	20	26	3	53
STATE POLICE	0	2	0	2	18	14	2	38
SHERIFF	0	0	0	0	0	0	0	0
AUGUSTA	0	0	0	0	2	12	1	15
ALL OTHER AGENCIES	0	0	0	0	0	0	0	0
<b>BREATHITT</b>	0	11	3	15	107	153	18	307
STATE POLICE	0	11	2	8	72	67	11	171
SHERIFF	0	0	0	0	4	5	1	10
JACKSON	0	0	1	7	31	81	6	126
ALL OTHER AGENCIES	0	0	0	0	0	0	0	0
<b>BRECKINRIDGE</b>	0	3	0	3	27	54	9	96
STATE POLICE	0	3	0	1	11	11	0	26
SHERIFF	0	0	0	0	7	19	4	30
HARDINSBURG	0	0	0	1	4	8	0	13
CLOVERPORT	0	0	0	0	3	14	4	21
IRVINGTON	0	0	0	1	2	2	1	6
ALL OTHER AGENCIES	0	0	0	0	0	0	0	0
<b>BULLITT</b>	1	4	10	10	249	500	59	833
STATE POLICE	1	3	0	5	10	8	5	32
SHERIFF	0	1	3	3	158	250	32	447
SHEPHERDSVILLE	0	0	1	1	2	10	1	15
LEBANON JUNCTION	0	0	2	0	16	31	3	52
MT WASHINGTON	0	0	0	0	25	96	9	130
HILLVIEW	0	0	3	1	24	88	5	121
PIONEER VILLAGE	0	0	1	0	14	15	4	34
ALL OTHER AGENCIES	0	0	0	0	0	2	0	2

## KENTUCKY OFFENSES BY COUNTY AND AGENCY

COUNTY CONTRIBUTING AGENCY	MURDER	RAPE	ROBBERY	ASSAULT	BURGLARY	LARCENY	AUTO THEFT	TOTAL
<b>BUTLER</b>	0	1	1	1	60	49	12	124
STATE POLICE	0	1	0	1	21	9	2	34
SHERIFF	0	0	0	0	9	6	7	22
MORGANTOWN	0	0	1	0	30	34	3	68
ALL OTHER AGENCIES	0	0	0	0	0	0	0	0
<b>CALDWELL</b>	1	4	3	7	97	168	11	291
STATE POLICE	0	0	0	0	37	17	1	55
SHERIFF	0	0	0	0	0	1	0	1
PRINCETON	1	4	3	7	60	150	10	235
ALL OTHER AGENCIES	0	0	0	0	0	0	0	0
<b>CALLOWAY</b>	0	4	5	37	202	430	28	706
STATE POLICE	0	0	1	1	0	23	0	25
SHERIFF	0	1	0	23	141	162	18	345
MURRAY	0	0	4	12	28	156	9	209
MURRAY STATE UNIV	0	3	0	1	33	89	1	127
ALL OTHER AGENCIES	0	0	0	0	0	0	0	0
<b>CAMPBELL</b>	1	16	55	88	521	2,270	175	3,126
STATE POLICE	0	0	0	0	1	0	0	1
SHERIFF	0	0	0	0	0	1	0	1
BELLEVUE	0	1	10	6	72	294	18	401
CAMPBELL CO PD	1	6	3	12	57	167	9	255
DAYTON	0	0	5	14	93	153	23	288
FT THOMAS	0	1	2	1	27	160	10	201
HIGHLAND HEIGHTS	0	0	1	1	24	83	3	112
NEWPORT	0	8	27	46	185	1,108	97	1,471
ALEXANDRIA	0	0	2	3	25	147	4	181
SOUTHGATE	0	0	1	0	1	1	1	4
COLD SPRINGS	0	0	4	1	10	60	3	78
SILVER GROVE	0	0	0	0	1	0	0	1
WILDER	0	0	0	3	4	17	6	30
NORTHERN KY UNIV	0	0	0	1	21	79	1	102
ALL OTHER AGENCIES	0	0	0	0	0	0	0	0
<b>CARLISLE</b>	0	0	0	0	0	2	0	2
STATE POLICE	0	0	0	0	0	1	0	1
SHERIFF	0	0	0	0	0	0	0	0
ALL OTHER AGENCIES	0	0	0	0	0	1	0	1
<b>CARROLL</b>	2	0	2	17	60	157	24	262
STATE POLICE	2	0	0	4	20	32	7	65
SHERIFF	0	0	2	3	12	31	6	54
CARROLLTON	0	0	0	10	28	91	11	140
ALL OTHER AGENCIES	0	0	0	0	0	3	0	3
<b>CARTER</b>	1	17	6	31	172	222	44	493
STATE POLICE	1	15	2	19	113	108	27	285
SHERIFF	0	0	0	0	0	1	0	1
GRAYSON	0	2	4	8	46	89	15	164
OLIVE HILL	0	0	0	4	10	18	2	34
ALL OTHER AGENCIES	0	0	0	0	3	6	0	9

## KENTUCKY OFFENSES BY COUNTY AND AGENCY

COUNTY CONTRIBUTING AGENCY	MURDER	RAPE	ROBBERY	ASSAULT	BURGLARY	LARCENY	AUTO THEFT	TOTAL
<b>CASEY</b>	1	3	1	9	35	18	6	73
STATE POLICE	1	3	1	9	11	8	1	34
SHERIFF	0	0	0	0	24	9	5	38
LIBERTY	0	0	0	0	0	1	0	1
ALL OTHER AGENCIES	0	0	0	0	0	0	0	0
<b>CHRISTIAN</b>	4	25	57	133	638	1,855	130	2,842
STATE POLICE	1	0	0	3	52	30	7	93
SHERIFF	0	0	5	13	72	119	14	223
HOPKINSVILLE	2	21	44	87	398	1,530	85	2,167
CROFTON	0	0	0	0	1	2	0	3
PEMBROKE	0	0	0	0	0	0	0	0
OAK GROVE	1	4	8	16	98	115	19	261
ALL OTHER AGENCIES	0	0	0	14	17	59	5	95
<b>CLARK</b>	1	3	12	28	260	831	62	1,197
STATE POLICE	0	2	0	0	2	11	3	18
SHERIFF	0	1	2	5	106	145	16	275
WINCHESTER	1	0	10	23	152	675	43	904
ALL OTHER AGENCIES	0	0	0	0	0	0	0	0
<b>CLAY</b>	6	11	1	25	173	139	43	398
STATE POLICE	5	10	1	10	62	27	15	130
SHERIFF	0	1	0	12	95	83	20	211
MANCHESTER	1	0	0	3	16	29	8	57
ALL OTHER AGENCIES	0	0	0	0	0	0	0	0
<b>CLINTON</b>	0	3	1	6	19	19	2	50
STATE POLICE	0	3	1	1	8	10	0	23
SHERIFF	0	0	0	1	4	0	1	6
ALBANY	0	0	0	4	6	9	1	20
ALL OTHER AGENCIES	0	0	0	0	1	0	0	1
<b>CRITENDEN</b>	0	0	1	4	27	98	7	137
STATE POLICE	0	0	1	3	7	48	0	59
SHERIFF	0	0	0	0	6	5	1	12
MARION	0	0	0	1	14	45	6	66
ALL OTHER AGENCIES	0	0	0	0	0	0	0	0
<b>CUMBERLAND</b>	0	1	1	3	23	17	2	47
STATE POLICE	0	1	1	3	10	5	1	21
SHERIFF	0	0	0	0	0	0	0	0
BURKESVILLE	0	0	0	0	13	10	1	24
ALL OTHER AGENCIES	0	0	0	0	0	2	0	2
<b>DAVISS</b>	0	26	73	65	723	2,319	112	3,318
STATE POLICE	0	4	0	2	69	67	14	156
SHERIFF	0	0	1	5	54	154	3	217
OWENSBORO	0	22	72	58	600	2,098	95	2,945
ALL OTHER AGENCIES	0	0	0	0	0	0	0	0
<b>EDMONSON</b>	0	4	0	3	47	39	14	107
STATE POLICE	0	4	0	2	19	10	3	38
SHERIFF	0	0	0	1	26	27	11	65
BROWNSVILLE	0	0	0	0	2	0	0	2
ALL OTHER AGENCIES	0	0	0	0	0	2	0	2

## KENTUCKY OFFENSES BY COUNTY AND AGENCY

COUNTY CONTRIBUTING AGENCY	MURDER	RAPE	ROBBERY	ASSAULT	BURGLARY	LARCENY	AUTO THEFT	TOTAL
<b>ELLIOTT</b>	1	2	0	7	19	22	7	58
STATE POLICE	1	2	0	7	19	20	7	56
SHERIFF	0	0	0	0	0	0	0	0
ALL OTHER AGENCIES	0	0	0	0	0	2	0	2
<b>ESTILL</b>	0	9	3	14	71	100	27	224
STATE POLICE	0	6	2	10	29	27	11	85
SHERIFF	0	0	0	0	2	2	6	10
IRVINE	0	3	1	4	37	71	10	126
RAVENNA	0	0	0	0	3	0	0	3
ALL OTHER AGENCIES	0	0	0	0	0	0	0	0
<b>FAYETTE</b>	24	135	594	1,203	2,745	10,776	928	16,405
STATE POLICE	0	2	0	1	0	7	3	13
SHERIFF	0	0	0	0	0	0	0	0
LEXINGTON	24	130	580	1,195	2,610	9,721	906	15,166
UK PD	0	3	5	3	69	648	15	743
FAYETTE CO SCHOOLS	0	0	9	4	62	352	3	430
BLUEGRASS AIRPORT	0	0	0	0	3	9	1	13
KY HORSE PARK	0	0	0	0	1	39	0	40
ALL OTHER AGENCIES	0	0	0	0	0	0	0	0
<b>FLEMING</b>	1	3	0	5	32	48	6	95
STATE POLICE	1	2	0	4	21	22	5	55
SHERIFF	0	0	0	0	0	3	0	3
FLEMINGSBURG	0	1	0	1	11	23	1	37
ALL OTHER AGENCIES	0	0	0	0	0	0	0	0
<b>FLOYD</b>	1	12	11	28	155	133	65	405
STATE POLICE	1	12	8	25	151	116	57	370
SHERIFF	0	0	0	0	0	0	0	0
PRESTONSBURG	0	0	3	2	1	8	7	21
WHEELWRIGHT	0	0	0	0	0	0	1	1
ALL OTHER AGENCIES	0	0	0	1	3	9	0	13
<b>FRANKLIN</b>	5	20	53	98	323	1,084	89	1,672
STATE POLICE	2	5	7	7	86	152	12	271
SHERIFF	0	0	1	1	14	49	5	70
FRANKFORT	3	15	45	89	220	826	68	1,266
KY STATE UNIVERSITY	0	0	0	0	3	56	4	63
ALL OTHER AGENCIES	0	0	0	1	0	1	0	2
<b>FULTON</b>	0	3	9	9	95	213	14	343
STATE POLICE	0	0	0	0	0	0	1	1
SHERIFF	0	1	1	0	17	17	3	39
FULTON	0	2	5	8	44	148	9	216
HICKMAN	0	0	3	1	34	48	1	87
ALL OTHER AGENCIES	0	0	0	0	0	0	0	0
<b>GALLATIN</b>	0	2	4	6	15	50	6	83
STATE POLICE	0	2	4	3	6	19	1	35
SHERIFF	0	0	0	0	2	0	0	2
WARSAW	0	0	0	3	5	22	5	35
ALL OTHER AGENCIES	0	0	0	0	2	9	0	11

## KENTUCKY OFFENSES BY COUNTY AND AGENCY

COUNTY CONTRIBUTING AGENCY	MURDER	RAPE	ROBBERY	ASSAULT	BURGLARY	LARCENY	AUTO THEFT	TOTAL
<b>GARRARD</b>	0	2	3	12	118	187	29	351
STATE POLICE	0	1	2	2	46	26	10	87
SHERIFF	0	0	0	0	43	49	7	99
LANCASTER	0	1	1	10	29	112	12	165
ALL OTHER AGENCIES	0	0	0	0	0	0	0	0
<b>GRANT</b>	0	6	4	12	98	185	24	329
STATE POLICE	0	4	3	6	75	107	12	207
SHERIFF	0	0	0	1	5	7	0	13
WILLIAMSTOWN	0	1	1	3	14	46	8	73
CRITTENDEN	0	0	0	0	0	1	0	1
ALL OTHER AGENCIES	0	1	0	2	4	24	4	35
<b>GRAVES</b>	1	9	14	27	176	312	40	579
STATE POLICE	0	6	0	6	56	57	14	139
SHERIFF	0	0	0	1	42	65	5	113
MAYFIELD	1	3	14	20	78	190	20	326
WINGO	0	0	0	0	0	0	1	1
ALL OTHER AGENCIES	0	0	0	0	0	0	0	0
<b>GRAYSON</b>	1	10	2	6	123	210	28	380
STATE POLICE	1	1	1	1	9	8	2	23
SHERIFF	0	9	0	3	58	55	11	136
LEITCHFIELD	0	0	0	2	41	138	14	195
CANEYVILLE	0	0	0	0	12	7	1	20
ALL OTHER AGENCIES	0	0	1	0	3	2	0	6
<b>GREEN</b>	0	5	1	16	42	20	6	90
STATE POLICE	0	5	1	14	34	16	3	73
SHERIFF	0	0	0	0	3	0	1	4
GREENSBURG	0	0	0	2	5	4	2	13
ALL OTHER AGENCIES	0	0	0	0	0	0	0	0
<b>GREENUP</b>	1	7	4	16	174	336	31	569
STATE POLICE	1	7	2	5	43	42	6	106
SHERIFF	0	0	0	3	82	99	12	196
FLATWOODS	0	0	1	4	16	38	4	63
GREENUP	0	0	0	0	6	3	1	10
RACELAND	0	0	0	1	9	19	3	32
SOUTH SHORE	0	0	0	1	0	2	0	3
RUSSELL	0	0	1	0	9	116	5	131
WORTHINGTON	0	0	0	0	0	0	0	0
WURLAND	0	0	0	2	4	9	0	15
ALL OTHER AGENCIES	0	0	0	0	5	8	0	13
<b>HANCOCK</b>	0	0	0	1	10	21	3	35
STATE POLICE	0	0	0	0	5	9	1	15
SHERIFF	0	0	0	0	3	6	2	11
LEWISPORT	0	0	0	1	2	6	0	9
ALL OTHER AGENCIES	0	0	0	0	0	0	0	0

## KENTUCKY OFFENSES BY COUNTY AND AGENCY

COUNTY CONTRIBUTING AGENCY	MURDER	RAPE	ROBBERY	ASSAULT	BURGLARY	LARCENY	AUTO THEFT	TOTAL
<b>HARDIN</b>	4	22	71	93	523	1,854	136	2,703
STATE POLICE	2	6	7	14	100	148	43	320
SHERIFF	0	1	0	1	17	23	4	46
ELIZABETHTOWN	0	5	33	31	191	905	57	1,222
RADCLIFF	1	9	29	41	194	714	27	1,015
VINE GROVE	0	1	1	6	18	53	2	81
WEST POINT	1	0	1	0	3	11	3	19
ALL OTHER AGENCIES	0	0	0	0	0	0	0	0
<b>HARLAN</b>	3	8	13	55	192	316	44	631
STATE POLICE	3	5	7	27	128	193	24	387
SHERIFF	0	1	2	14	17	22	6	62
CUMBERLAND	0	1	2	3	25	42	8	81
HARLAN	0	1	1	5	15	42	2	66
LOYALL	0	0	0	0	0	0	0	0
LYNCH	0	0	1	3	3	13	1	21
EVARTS	0	0	0	0	0	0	0	0
BENHAM	0	0	0	3	3	3	3	12
ALL OTHER AGENCIES	0	0	0	0	1	1	0	2
<b>HARRISON</b>	0	6	6	15	88	202	23	340
STATE POLICE	0	3	1	7	24	13	3	51
SHERIFF	0	0	0	0	13	15	4	32
CYNTHIANA	0	3	5	8	51	174	16	257
ALL OTHER AGENCIES	0	0	0	0	0	0	0	0
<b>HART</b>	1	4	3	1	26	66	11	112
STATE POLICE	1	4	1	1	14	16	4	41
SHERIFF	0	0	0	0	3	10	1	14
MUNFORDVILLE	0	0	1	0	5	14	3	23
ALL OTHER AGENCIES	0	0	1	0	4	26	3	34
<b>HENDERSON</b>	1	20	33	79	395	1,563	106	2,197
STATE POLICE	0	2	1	7	30	67	5	112
SHERIFF	0	1	1	4	71	147	15	239
HENDERSON	1	17	31	68	294	1,349	86	1,846
ALL OTHER AGENCIES	0	0	0	0	0	0	0	0
<b>HENRY</b>	0	12	0	6	45	35	11	109
STATE POLICE	0	12	0	6	41	35	5	99
SHERIFF	0	0	0	0	2	0	2	4
NEW CASTLE	0	0	0	0	0	0	0	0
EMINENCE	0	0	0	0	1	0	3	4
CAMPBELLSBURG	0	0	0	0	0	0	0	0
ALL OTHER AGENCIES	0	0	0	0	1	0	1	2
<b>HICKMAN</b>	1	2	1	0	7	2	0	13
STATE POLICE	1	2	1	0	6	1	0	11
SHERIFF	0	0	0	0	0	0	0	0
ALL OTHER AGENCIES	0	0	0	0	1	1	0	2

## KENTUCKY OFFENSES BY COUNTY AND AGENCY

COUNTY CONTRIBUTING AGENCY	MURDER	RAPE	ROBBERY	ASSAULT	BURGLARY	LARCENY	AUTO THEFT	TOTAL
<b>HOPKINS</b>	5	13	15	355	346	1,083	112	1,929
STATE POLICE	5	3	2	6	49	27	10	102
SHERIFF	0	0	0	5	105	88	8	206
MADISONVILLE	0	7	12	337	147	914	76	1,493
DAWSON SPRINGS	0	3	0	6	21	35	14	79
EARLINGTON	0	0	1	0	8	8	2	19
NORTONVILLE	0	0	0	1	14	11	2	28
ALL OTHER AGENCIES	0	0	0	0	2	0	0	2
<b>JACKSON</b>	3	0	0	18	68	55	8	152
STATE POLICE	3	0	0	14	44	22	2	85
SHERIFF	0	0	0	4	24	33	6	67
ALL OTHER AGENCIES	0	0	0	0	0	0	0	0
<b>JEFFERSON</b>	81	208	1,998	3,179	7,143	16,103	4,004	32,716
STATE POLICE	0	0	0	1	1	11	3	16
SHERIFF	0	0	0	0	0	4	15	19
JEFFERSON CO PD	15	66	305	1,800	2,159	4,644	794	9,783
LOUISVILLE	64	128	1,545	1,339	4,481	8,706	2,829	19,092
ST MATTHEWS	0	2	37	10	110	790	54	1,003
SHIVELY	1	4	66	18	185	394	189	857
ANCHORAGE	0	0	0	0	10	26	1	37
WEST BUECHEL	0	0	11	2	17	406	17	453
JEFFERSONTOWN	1	8	27	7	62	567	57	729
U OF L SECURITY	0	0	7	0	12	299	20	338
FAIRGROUND SECURITY	0	0	0	0	1	92	12	105
PROSPECT	0	0	0	0	9	31	2	42
JEFFERSON COMM COLL	0	0	0	0	0	0	0	0
JEFF CO BD OF ED	0	0	0	0	61	27	1	89
ALL OTHER AGENCIES	0	0	0	2	35	106	10	153
<b>JESSAMINE</b>	0	6	5	46	374	872	104	1,407
STATE POLICE	0	2	0	4	12	21	1	40
SHERIFF	0	1	0	6	150	173	29	359
NICHOLASVILLE	0	3	5	35	190	612	67	912
WILMORE	0	0	0	1	22	66	7	96
ALL OTHER AGENCIES	0	0	0	0	0	0	0	0
<b>JOHNSON</b>	1	4	3	9	99	118	24	258
STATE POLICE	1	4	3	7	90	63	17	185
SHERIFF	0	0	0	0	0	0	0	0
PAINTSVILLE	0	0	0	2	9	55	7	73
ALL OTHER AGENCIES	0	0	0	0	0	0	0	0
<b>KENTON</b>	6	51	216	241	1,141	4,004	360	6,019
STATE POLICE	0	1	0	0	0	1	0	2
SHERIFF	0	0	0	0	0	0	0	0
COVINGTON	4	29	199	176	784	2,335	281	3,808
ELSMERE	0	3	0	7	42	74	8	134
ERLANGER	0	5	4	1	41	451	10	512
FT WRIGHT	0	0	4	3	22	111	6	146
KENTON CO PD	1	3	0	21	62	154	11	252
PARK HILLS	0	0	0	1	17	38	2	58
LUDLOW	0	1	2	13	33	69	11	129

## KENTUCKY OFFENSES BY COUNTY AND AGENCY

COUNTY CONTRIBUTING AGENCY	MURDER	RAPE	ROBBERY	ASSAULT	BURGLARY	LARCENY	AUTO THEFT	TOTAL
LAKESIDE PARK	0	1	0	1	2	29	0	33
TAYLOR MILL	0	0	1	2	14	39	4	60
VILLA HILLS	0	2	0	0	9	81	0	92
FT MITCHELL	1	1	0	2	14	130	6	154
BROMLEY	0	0	0	0	0	0	0	0
EDGEWOOD	0	0	0	0	5	29	0	34
INDEPENDENCE	0	3	3	7	55	206	14	288
CRESCENT PARK	0	0	0	0	0	0	0	0
DIXIE POLICE AUTHOR	0	0	3	4	19	101	4	131
ALL OTHER AGENCIES	0	2	0	3	22	156	3	186
<b>KNOTT</b>	<b>1</b>	<b>3</b>	<b>1</b>	<b>9</b>	<b>41</b>	<b>125</b>	<b>22</b>	<b>202</b>
STATE POLICE	1	3	0	4	32	69	20	129
SHERIFF	0	0	1	5	5	54	2	67
HINDMAN	0	0	0	0	0	0	0	0
PIPPA PASSES	0	0	0	0	4	2	0	6
ALL OTHER AGENCIES	0	0	0	0	0	0	0	0
<b>KNOX</b>	<b>2</b>	<b>11</b>	<b>9</b>	<b>22</b>	<b>215</b>	<b>265</b>	<b>98</b>	<b>622</b>
STATE POLICE	1	11	8	18	194	213	78	523
SHERIFF	0	0	0	1	2	6	0	9
BARBOURVILLE	1	0	1	3	19	46	20	90
ALL OTHER AGENCIES	0	0	0	0	0	0	0	0
<b>LARUE</b>	<b>0</b>	<b>5</b>	<b>2</b>	<b>5</b>	<b>48</b>	<b>87</b>	<b>15</b>	<b>162</b>
STATE POLICE	0	2	2	1	9	15	3	32
SHERIFF	0	3	0	1	27	47	9	87
HODGENVILLE	0	0	0	3	12	24	3	42
ALL OTHER AGENCIES	0	0	0	0	0	1	0	1
<b>LAUREL</b>	<b>1</b>	<b>14</b>	<b>13</b>	<b>32</b>	<b>368</b>	<b>918</b>	<b>237</b>	<b>1,583</b>
STATE POLICE	0	9	4	16	140	367	114	650
SHERIFF	1	3	3	10	165	254	62	498
LONDON	0	2	6	6	63	294	61	432
ALL OTHER AGENCIES	0	0	0	0	0	3	0	3
<b>LAWRENCE</b>	<b>0</b>	<b>2</b>	<b>1</b>	<b>12</b>	<b>59</b>	<b>85</b>	<b>34</b>	<b>193</b>
STATE POLICE	0	1	1	11	29	38	15	95
SHERIFF	0	0	0	0	19	34	13	66
LOUISA	0	1	0	1	11	13	6	32
ALL OTHER AGENCIES	0	0	0	0	0	0	0	0
<b>LEE</b>	<b>1</b>	<b>3</b>	<b>1</b>	<b>4</b>	<b>30</b>	<b>20</b>	<b>5</b>	<b>64</b>
STATE POLICE	1	3	1	4	24	9	3	45
SHERIFF	0	0	0	0	4	3	1	8
BEATTYVILLE	0	0	0	0	2	8	1	11
ALL OTHER AGENCIES	0	0	0	0	0	0	0	0
<b>LESLIE</b>	<b>0</b>	<b>8</b>	<b>4</b>	<b>9</b>	<b>55</b>	<b>58</b>	<b>21</b>	<b>155</b>
STATE POLICE	0	8	4	9	53	52	19	145
SHERIFF	0	0	0	0	0	3	2	5
ALL OTHER AGENCIES	0	0	0	0	2	3	0	5



## KENTUCKY OFFENSES BY COUNTY AND AGENCY

COUNTY CONTRIBUTING AGENCY	MURDER	RAPE	ROBBERY	ASSAULT	BURGLARY	LARCENY	AUTO THEFT	TOTAL
<b>LETCHER</b>	2	3	5	11	80	117	17	235
STATE POLICE	2	2	4	8	58	81	10	165
SHERIFF	0	1	1	0	7	11	4	24
WHITESBURG	0	0	0	1	4	4	2	11
JENKINS	0	0	0	1	6	12	1	20
FLEMING-NEON	0	0	0	0	0	0	0	0
ALL OTHER AGENCIES	0	0	0	1	5	9	0	15
<b>LEWIS</b>	2	4	1	6	44	51	16	124
STATE POLICE	2	3	1	5	23	23	8	65
SHERIFF	0	0	0	0	5	2	2	9
VANCEBURG	0	1	0	1	16	26	6	50
ALL OTHER AGENCIES	0	0	0	0	0	0	0	0
<b>LINCOLN</b>	0	9	1	19	110	135	33	307
STATE POLICE	0	8	1	15	75	44	21	164
SHERIFF	0	0	0	0	17	53	7	77
STANFORD	0	1	0	4	13	29	3	50
HUSTONVILLE	0	0	0	0	0	0	0	0
ALL OTHER AGENCIES	0	0	0	0	5	9	2	16
<b>LIVINGSTON</b>	2	1	1	7	59	56	5	131
STATE POLICE	2	1	0	4	35	23	3	68
SHERIFF	0	0	1	3	24	33	2	63
ALL OTHER AGENCIES	0	0	0	0	0	0	0	0
<b>LOGAN</b>	0	4	4	23	148	316	33	528
STATE POLICE	0	0	0	2	11	11	2	26
SHERIFF	0	2	1	6	59	72	11	151
RUSSELLVILLE	0	2	3	15	70	223	19	332
AUBURN	0	0	0	0	7	8	0	15
ADAIRVILLE	0	0	0	0	1	0	1	2
LEWISBURG	0	0	0	0	0	2	0	2
ALL OTHER AGENCIES	0	0	0	0	0	0	0	0
<b>LYON</b>	0	1	0	22	42	87	3	155
STATE POLICE	0	1	0	22	33	73	3	132
SHERIFF	0	0	0	0	7	11	0	18
LYON COUNTY PD	0	0	0	0	0	2	0	2
ALL OTHER AGENCIES	0	0	0	0	2	1	0	3
<b>MCCRACKEN</b>	14	35	68	154	460	2,117	179	3,027
STATE POLICE	3	3	0	6	6	12	2	32
SHERIFF	3	10	5	23	170	449	48	708
PADUCAH	8	22	63	124	282	1,644	127	2,270
McCRACKEN CO PD	0	0	0	0	0	0	0	0
LONE OAK	0	0	0	1	2	12	2	17
ALL OTHER AGENCIES	0	0	0	0	0	0	0	0
<b>MCCREARY</b>	5	8	2	10	59	81	21	186
STATE POLICE	5	7	0	5	48	31	9	105
SHERIFF	0	1	2	5	11	44	12	75
ALL OTHER AGENCIES	0	0	0	0	0	6	0	6

## KENTUCKY OFFENSES BY COUNTY AND AGENCY

COUNTY CONTRIBUTING AGENCY	MURDER	RAPE	ROBBERY	ASSAULT	BURGLARY	LARCENY	AUTO THEFT	TOTAL
<b>MCLEAN</b>	0	0	2	6	22	12	5	47
STATE POLICE	0	0	2	6	20	12	3	43
SHERIFF	0	0	0	0	1	0	0	1
ALL OTHER AGENCIES	0	0	0	0	1	0	2	3
<b>MADISON</b>	4	13	44	98	491	1,675	164	2,489
STATE POLICE	0	4	4	10	76	112	30	236
SHERIFF	0	0	1	3	93	130	17	244
BEREA	0	3	7	8	83	303	25	429
RICHMOND	4	5	28	73	236	991	85	1,422
E K U SECURITY	0	1	4	4	3	137	7	156
ALL OTHER AGENCIES	0	0	0	0	0	2	0	2
<b>MAGOFFIN</b>	0	3	0	6	62	49	28	148
STATE POLICE	0	3	0	6	55	32	23	119
SHERIFF	0	0	0	0	7	17	5	29
ALL OTHER AGENCIES	0	0	0	0	0	0	0	0
<b>MARION</b>	1	4	14	21	171	290	25	526
STATE POLICE	1	3	1	6	46	47	13	117
SHERIFF	0	0	0	4	32	64	4	104
LEBANON	0	1	13	11	93	179	8	305
LORETTO	0	0	0	0	0	0	0	0
ALL OTHER AGENCIES	0	0	0	0	0	0	0	0
<b>MARSHALL</b>	0	5	4	11	157	524	29	730
STATE POLICE	0	1	0	0	3	7	3	14
SHERIFF	0	4	3	10	112	358	18	505
BENTON	0	0	1	1	28	93	1	124
CALVERT CITY	0	0	0	0	11	52	5	68
ALL OTHER AGENCIES	0	0	0	0	3	14	2	19
<b>MARTIN</b>	0	2	1	25	43	64	35	170
STATE POLICE	0	2	1	25	42	22	24	116
SHERIFF	0	0	0	0	1	42	11	54
ALL OTHER AGENCIES	0	0	0	0	0	0	0	0
<b>MASON</b>	0	8	12	19	113	379	21	552
STATE POLICE	0	2	1	1	0	3	0	7
SHERIFF	0	0	0	4	50	57	4	115
MAYSVILLE	0	6	11	14	63	319	17	430
ALL OTHER AGENCIES	0	0	0	0	0	0	0	0
<b>MEADE</b>	0	2	3	9	101	74	9	198
STATE POLICE	0	2	0	4	16	7	1	30
SHERIFF	0	0	2	3	60	46	7	118
BRANDENBURG	0	0	1	0	11	7	0	19
MULDRAUGH	0	0	0	2	14	14	1	31
ALL OTHER AGENCIES	0	0	0	0	0	0	0	0
<b>MENIFEE</b>	0	4	0	2	69	30	10	115
STATE POLICE	0	4	0	1	69	30	10	114
SHERIFF	0	0	0	0	0	0	0	0
ALL OTHER AGENCIES	0	0	0	1	0	0	0	1

## KENTUCKY OFFENSES BY COUNTY AND AGENCY

COUNTY CONTRIBUTING AGENCY	MURDER	RAPE	ROBBERY	ASSAULT	BURGLARY	LARCENY	AUTO THEFT	TOTAL
<b>MERCER</b>	2	6	7	8	103	147	29	302
STATE POLICE	2	2	3	1	19	10	4	41
SHERIFF	0	0	0	1	29	21	4	55
HARRODSBURG	0	4	4	6	55	116	21	206
ALL OTHER AGENCIES	0	0	0	0	0	0	0	0
<b>METCALFE</b>	0	5	2	6	46	72	3	134
STATE POLICE	0	4	1	5	20	17	1	48
SHERIFF	0	1	0	0	17	16	1	35
EDMONTON	0	0	1	1	9	39	1	51
ALL OTHER AGENCIES	0	0	0	0	0	0	0	0
<b>MONROE</b>	1	1	0	3	13	7	1	26
STATE POLICE	1	1	0	3	13	7	1	26
SHERIFF	0	0	0	0	0	0	0	0
TOMPKINSVILLE	0	0	0	0	0	0	0	0
ALL OTHER AGENCIES	0	0	0	0	0	0	0	0
<b>MONTGOMERY</b>	1	2	10	21	150	495	48	727
STATE POLICE	1	2	2	3	40	12	5	65
SHERIFF	0	0	3	0	49	108	21	181
MT STERLING	0	0	5	18	61	375	22	481
ALL OTHER AGENCIES	0	0	0	0	0	0	0	0
<b>MORGAN</b>	0	1	0	11	48	74	10	144
STATE POLICE	0	1	0	4	38	39	9	91
SHERIFF	0	0	0	0	0	0	0	0
WEST LIBERTY	0	0	0	7	10	35	1	53
ALL OTHER AGENCIES	0	0	0	0	0	0	0	0
<b>MUHLENBERG</b>	1	8	5	25	102	186	22	349
STATE POLICE	1	4	0	6	26	21	3	61
SHERIFF	0	1	1	0	44	14	6	66
GREENVILLE	0	0	0	3	2	13	0	18
CENTRAL CITY	0	3	4	16	30	138	13	204
POWDERLY	0	0	0	0	0	0	0	0
ALL OTHER AGENCIES	0	0	0	0	0	0	0	0
<b>NELSON</b>	2	7	12	44	234	640	41	980
STATE POLICE	1	2	0	4	28	39	5	79
SHERIFF	0	0	0	0	47	66	6	119
BARDSTOWN	1	5	12	40	123	495	22	698
BLOOMFIELD	0	0	0	0	2	6	1	9
NELSON CO PD	0	0	0	0	34	34	7	75
ALL OTHER AGENCIES	0	0	0	0	0	0	0	0
<b>NICHOLAS</b>	1	2	0	5	30	50	16	104
STATE POLICE	1	2	0	4	28	30	9	74
SHERIFF	0	0	0	0	0	0	0	0
CARLISLE	0	0	0	1	2	20	7	30
ALL OTHER AGENCIES	0	0	0	0	0	0	0	0

## KENTUCKY OFFENSES BY COUNTY AND AGENCY

COUNTY CONTRIBUTING AGENCY	MURDER	RAPE	ROBBERY	ASSAULT	BURGLARY	LARCENY	AUTO THEFT	TOTAL
<b>OHIO</b>	1	1	3	10	133	166	14	328
STATE POLICE	1	1	1	7	40	36	6	92
SHERIFF	0	0	1	2	81	96	8	188
HARTFORD	0	0	1	1	9	19	0	30
CENTERTOWN	0	0	0	0	0	0	0	0
FORDSVILLE	0	0	0	0	0	0	0	0
ALL OTHER AGENCIES	0	0	0	0	3	15	0	18
<b>OLDHAM</b>	0	10	9	31	200	532	50	832
STATE POLICE	0	1	0	5	3	1	4	14
SHERIFF	0	0	2	6	3	17	2	30
LAGRANGE	0	2	2	8	31	155	11	209
PEWEE VALLEY	0	1	0	1	5	10	0	17
OLDHAM CO PD	0	6	5	11	158	349	33	562
ALL OTHER AGENCIES	0	0	0	0	0	0	0	0
<b>OWEN</b>	1	7	1	8	24	32	5	78
STATE POLICE	1	6	1	6	14	14	4	46
SHERIFF	0	0	0	0	7	11	1	19
OWENTON	0	1	0	2	3	7	0	13
ALL OTHER AGENCIES	0	0	0	0	0	0	0	0
<b>OWSLEY</b>	3	0	0	6	13	13	1	36
STATE POLICE	3	0	0	6	9	4	0	22
SHERIFF	0	0	0	0	4	9	1	14
ALL OTHER AGENCIES	0	0	0	0	0	0	0	0
<b>PENDLETON</b>	0	5	0	3	54	88	14	164
STATE POLICE	0	5	0	2	40	61	8	116
SHERIFF	0	0	0	0	4	6	0	10
FALMOUTH	0	0	0	1	8	13	6	28
BUTLER	0	0	0	0	1	1	0	2
ALL OTHER AGENCIES	0	0	0	0	1	7	0	8
<b>PERRY</b>	0	13	8	43	196	407	90	757
STATE POLICE	0	10	3	22	113	161	39	348
SHERIFF	0	0	0	4	23	33	18	78
HAZARD	0	3	5	17	60	213	33	331
VICCO	0	0	0	0	0	0	0	0
ALL OTHER AGENCIES	0	0	0	0	0	0	0	0
<b>PIKE</b>	5	11	17	63	392	857	98	1,443
STATE POLICE	5	10	14	55	289	539	71	983
SHERIFF	0	0	0	0	15	55	8	78
PIKEVILLE	0	1	3	8	84	229	17	342
ALL OTHER AGENCIES	0	0	0	0	4	34	2	40
<b>POWELL</b>	1	8	1	7	84	112	16	229
STATE POLICE	1	8	1	7	63	66	13	159
SHERIFF	0	0	0	0	16	35	1	52
STANTON	0	0	0	0	0	0	0	0
ALL OTHER AGENCIES	0	0	0	0	5	11	2	18

## KENTUCKY OFFENSES BY COUNTY AND AGENCY

COUNTY CONTRIBUTING AGENCY	MURDER	RAPE	ROBBERY	ASSAULT	BURGLARY	LARCENY	AUTO THEFT	TOTAL
<b>PULASKI</b>	2	19	17	37	356	963	83	1,477
STATE POLICE	0	5	2	0	34	47	14	102
SHERIFF	1	1	6	0	209	409	32	658
SOMERSET	1	13	9	37	111	502	36	709
BURNSIDE	0	0	0	0	0	0	0	0
EUBANK	0	0	0	0	1	0	0	1
ALL OTHER AGENCIES	0	0	0	0	1	5	1	7
<b>ROBERTSON</b>	0	0	0	0	2	7	1	10
STATE POLICE	0	0	0	0	2	7	1	10
SHERIFF	0	0	0	0	0	0	0	0
ALL OTHER AGENCIES	0	0	0	0	0	0	0	0
<b>ROCKCASTLE</b>	0	2	4	8	115	115	40	284
STATE POLICE	0	2	2	5	18	17	10	54
SHERIFF	0	0	2	1	78	53	20	154
MT VERNON	0	0	0	1	13	43	9	66
BRODHEAD	0	0	0	0	2	1	0	3
ALL OTHER AGENCIES	0	0	0	1	4	1	1	7
<b>ROWAN</b>	1	5	3	20	106	374	21	530
STATE POLICE	1	4	1	11	71	108	13	209
SHERIFF	0	0	0	1	2	9	1	13
MOREHEAD	0	1	2	8	26	117	6	160
MOREHEAD STATE UNIV	0	0	0	0	7	140	1	148
ALL OTHER AGENCIES	0	0	0	0	0	0	0	0
<b>RUSSELL</b>	2	6	0	10	76	125	12	231
STATE POLICE	2	6	0	9	41	33	4	95
SHERIFF	0	0	0	0	9	17	2	28
JAMESTOWN	0	0	0	1	13	18	0	32
RUSSELL SPRINGS	0	0	0	0	12	53	6	71
ALL OTHER AGENCIES	0	0	0	0	1	4	0	5
<b>SCOTT</b>	0	14	12	81	222	910	46	1,285
STATE POLICE	0	2	0	2	8	18	2	32
SHERIFF	0	6	2	4	44	108	9	173
GEORGETOWN	0	6	10	75	168	779	35	1,073
STAMPING GROUND	0	0	0	0	0	1	0	1
ALL OTHER AGENCIES	0	0	0	0	2	4	0	6
<b>SHELBY</b>	1	10	15	35	154	370	64	649
STATE POLICE	1	5	1	7	52	60	11	137
SHERIFF	0	2	5	2	31	90	19	149
SHELBYVILLE	0	3	9	26	71	220	34	363
ALL OTHER AGENCIES	0	0	0	0	0	0	0	0
<b>SIMPSON</b>	0	1	14	14	164	310	32	535
STATE POLICE	0	0	0	1	7	7	2	17
SHERIFF	0	1	7	5	60	103	7	183
FRANKLIN	0	0	7	8	97	200	23	335
ALL OTHER AGENCIES	0	0	0	0	0	0	0	0

## KENTUCKY OFFENSES BY COUNTY AND AGENCY

COUNTY CONTRIBUTING AGENCY	MURDER	RAPE	ROBBERY	ASSAULT	BURGLARY	LARCENY	AUTO THEFT	TOTAL
<b>SPENCER</b>	1	3	1	3	60	37	8	113
STATE POLICE	1	3	1	2	30	14	4	55
SHERIFF	0	0	0	1	17	3	0	21
TAYLORSVILLE	0	0	0	0	13	20	2	35
ALL OTHER AGENCIES	0	0	0	0	0	0	2	2
<b>TAYLOR</b>	1	9	14	43	184	483	44	778
STATE POLICE	1	2	0	1	3	10	4	21
SHERIFF	0	0	1	3	50	75	11	140
CAMPBELLSVILLE	0	7	13	39	131	392	29	611
ALL OTHER AGENCIES	0	0	0	0	0	6	0	6
<b>TODD</b>	1	2	0	13	37	35	9	97
STATE POLICE	1	1	0	3	5	5	1	16
SHERIFF	0	0	0	0	18	14	1	33
ELKTON	0	1	0	8	11	9	2	31
GUTHRIE	0	0	0	2	3	7	5	17
TRENTON	0	0	0	0	0	0	0	0
ALL OTHER AGENCIES	0	0	0	0	0	0	0	0
<b>TRIGG</b>	0	3	3	17	69	228	23	343
STATE POLICE	0	3	0	0	1	4	1	9
SHERIFF	0	0	0	10	29	72	15	126
CADIZ	0	0	3	7	38	144	7	199
LAND BETWEEN LAKES	0	0	0	0	0	0	0	0
ALL OTHER AGENCIES	0	0	0	0	1	8	0	9
<b>TRIMBLE</b>	1	3	1	0	29	24	7	65
STATE POLICE	1	3	0	0	15	6	5	30
SHERIFF	0	0	1	0	14	18	2	35
ALL OTHER AGENCIES	0	0	0	0	0	0	0	0
<b>UNION</b>	0	3	9	23	79	203	15	332
STATE POLICE	0	2	4	9	29	45	4	93
SHERIFF	0	0	0	3	23	33	5	64
MORGANFIELD	0	1	5	6	19	90	3	124
STURGIS	0	0	0	5	6	29	3	43
UNIONTOWN	0	0	0	0	2	6	0	8
ALL OTHER AGENCIES	0	0	0	0	0	0	0	0
<b>WARREN</b>	10	35	110	311	944	2,719	258	4,387
STATE POLICE	6	13	6	10	152	305	30	522
SHERIFF	0	0	0	0	0	0	0	0
BOWLING GREEN	4	22	103	299	788	2,229	224	3,669
WESTERN KY UNIV	0	0	1	2	4	184	4	195
ALL OTHER AGENCIES	0	0	0	0	0	1	0	1
<b>WASHINGTON</b>	0	2	1	11	88	139	12	253
STATE POLICE	0	1	0	6	24	28	3	62
SHERIFF	0	0	1	1	54	61	5	122
SPRINGFIELD	0	1	0	4	10	50	4	69
ALL OTHER AGENCIES	0	0	0	0	0	0	0	0

## KENTUCKY OFFENSES BY COUNTY AND AGENCY

COUNTY CONTRIBUTING AGENCY	MURDER	RAPE	ROBBERY	ASSAULT	BURGLARY	LARCENY	AUTO THEFT	TOTAL
<b>WAYNE</b>	0	6	2	1	43	79	11	142
STATE POLICE	0	6	0	0	6	5	4	21
SHERIFF	0	0	0	0	0	0	0	0
MONTICELLO	0	0	2	1	37	74	7	121
ALL OTHER AGENCIES	0	0	0	0	0	0	0	0
<b>WEBSTER</b>	0	4	3	5	35	43	8	98
STATE POLICE	0	3	2	3	18	11	3	40
SHERIFF	0	0	0	0	0	11	1	12
PROVIDENCE	0	1	1	2	16	21	2	43
ALL OTHER AGENCIES	0	0	0	0	1	0	2	3
<b>WHITLEY</b>	8	8	9	35	224	285	100	669
STATE POLICE	7	4	2	17	131	79	49	289
SHERIFF	0	0	0	0	14	21	9	44
CORBIN	0	3	5	17	46	147	19	237
WILLIAMSBURG	1	1	2	1	31	26	23	85
ALL OTHER AGENCIES	0	0	0	0	2	12	0	14
<b>WOLFE</b>	2	3	0	4	25	53	12	99
STATE POLICE	2	3	0	4	23	42	12	86
SHERIFF	0	0	0	0	2	11	0	13
ALL OTHER AGENCIES	0	0	0	0	0	0	0	0
<b>WOODFORD</b>	1	3	3	9	86	328	18	448
STATE POLICE	0	0	1	0	1	2	1	5
SHERIFF	0	0	0	0	7	35	5	47
VERSAILLES	0	2	2	4	30	191	6	235
WOODFORD CO PD	1	1	0	5	48	100	6	161
ALL OTHER AGENCIES	0	0	0	0	0	0	0	0
<b>TOTAL</b>	253	1,191	3,886	7,997	27,667	74,557	9,815	125,366